

**Fish Caught on A Day in the Life of the Hudson River  
October 14, 2010**

		Fish Caught						
		<i>spottail shiner</i>	<i>banded killifish</i>	<i>Atlantic silverside</i>	<i>herring</i>	<i>white perch</i>	<i>striped bass</i>	<i>tessellated darter</i>
<b>NORTH</b>	<i>115/Athens</i>	5	8			5	5	1
	<i>96.5/Ulster landing</i>	79	2			49	1	2
	<i>87/Ulster Park</i>	60	10		40		3	2
	<i>76/Poughkeepsie Waryas Park</i>	27	3				3	10
	<i>61E/Beacon</i>	14	2		1		1	2
<b>SOUTH</b>	<i>58/New Windsor</i>	8	2		81	6	6	2
	<i>41/Verplank</i>				1	1	2	
	<i>32/Ossining</i>			12	117		1	
	<i>25W/Piermont</i>		2	136	39	3	39	
	<i>18/Yonkers</i>			18		3	9	
	<i>14/Harlem</i>			50			1	

**Fish Caught on A Day in the Life of the Hudson River  
October 14, 2010**

		Fish Caught						
		<i>spottail shiner</i>	<i>banded killifish</i>	<i>Atlantic silverside</i>	<i>herring</i>	<i>white perch</i>	<i>striped bass</i>	<i>tessellated darter</i>
<b>NORTH</b>	<i>115/Athens</i>	5	8			5	5	1
	<i>96.5/Ulster landing</i>	79	2			49	1	2
	<i>87/Ulster Park</i>	60	10		40		3	2
	<i>76/Poughkeepsie Waryas Park</i>	27	3				3	10
	<i>61E/Beacon</i>	14	2		1		1	2
<b>SOUTH</b>	<i>58/New Windsor</i>	8	2		81	6	6	2
	<i>41/Verplank</i>				1	1	2	
	<i>32/Ossining</i>			12	117		1	
	<i>25W/Piermont</i>		2	136	39	3	39	
	<i>18/Yonkers</i>			18		3	9	
	<i>14/Harlem</i>			50			1	

Where would you find these fish? In the table, look at the locations where each of these fish was found. Then circle *salt*, *fresh*, or *both* to show what kind of water the fish prefers. (the salt front location on October 14<sup>th</sup>, 2010 was around RM 32)

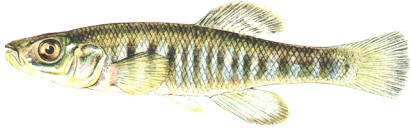


spottail shiner

*salt*

*fresh*

*both*

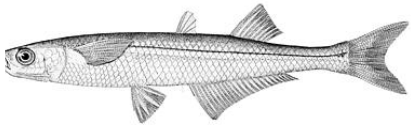


banded killifish

*salt*

*fresh*

*both*



Atlantic silverside

*salt*

*fresh*

*both*

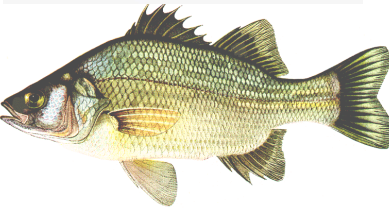


striped bass

*salt*

*fresh*

*both*



white perch

*salt*

*fresh*

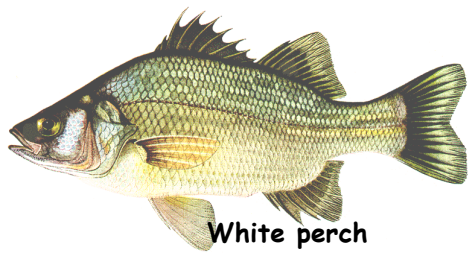
*both*

1. For a fish to live in a range of different salinities it has to be adaptable. Using this standard name 2 fish species caught on October 14 that seem to be fairly adaptable.
2. If you were to go to the same spot on the river every day for a week in June would you expect to catch the exact same thing every day? Would we expect to catch a similar assortment of fish? Explain your answer.

Using the fish key where would you find the following fish?

Northern pipefish  
American eel

Largemouth bass  
Hogchoker



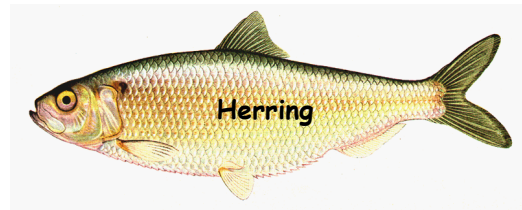
White perch



Atlantic silverside



Northern pipefish



Herring



Spottail shiner



Bluegill sunfish



Hogchoker



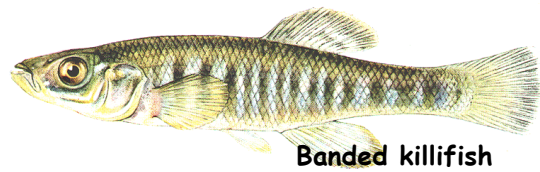
American eel



Largemouth bass



Striped bass



Banded killifish